

A large, stylized 'V' shape composed of two thick, parallel lines in a medium blue color, pointing downwards towards the center of the page. The background is a solid dark blue.

KALPATARU VIENTA

KANDIVALI [E]

TOWER A PLANS

Where par excellence is the standard.

Kalpataru Vienta is a home that has all the makings of a fine address. This marvelous twin-tower architecture boasts of indulgent living spaces, tastefully designed to match the lifestyle of its residents. The premium residences with deck* complement the quaint neighbourhood that offers surreal views of the city & greens. From a swanky podium, picturesque greens, sparkling pools to awe-inspiring club facilities, every corner of this iconic residential landmark is curated to maximise & elevate your lifestyle.

*In select 2, 3, 3.5 & 4 BHK



Artist's Impression



View so surreal,
even a short
visit here will
leave you
feeling ecstatic.

Your home at Kalpataru Vienta comes with your very own deck*. Opening up to the majestic skyline and the lush canopies below, it's sure to become your favourite part of the house. With a green canopy below, host a romantic dinner for your loved one, enjoy a warm cup of coffee or simply stare outside and make up for all the sunsets you've missed, this corner is sure to offer you the peace and privacy you yearn for.



*In select 2, 3, 3.5 & 4 BHK

Artist's Impression



MASTER LAYOUT

GROUND FLOOR PLAN

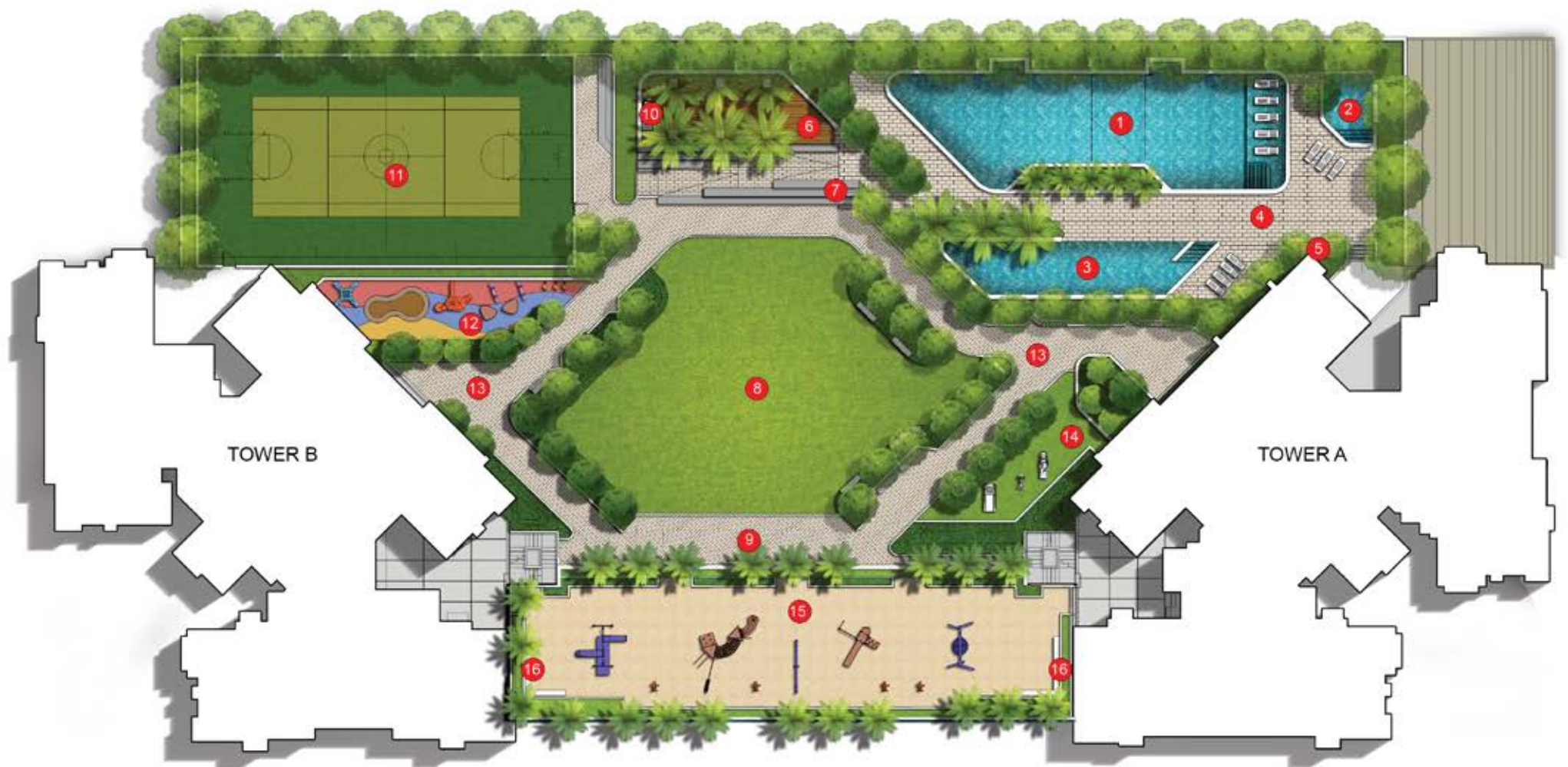


LEGEND

- 1. DROP-OFF POINT
- 2. ORGANIC GARDEN
- 3. RETAIL PLAZA



PODIUM FLOOR PLAN



LEGEND

HYDROZONE: (1-5)

1. FAMILY POOL WITH SPA SEATS
2. KIDS' POOL
3. FITNESS POOL
4. POOL DECK
5. OUTDOOR SHOWER

THE CENTROID: (6-10)

6. DUSK LOUNGE
7. TIERED SEATING
8. CELEBRATION HUB
9. PARTY DECK
10. BBQ COUNTER

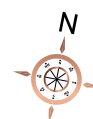
11. MULTIPURPOSE SPORTS COURT
12. ALFRESCO FITNESS ZONE
13. FITNESS PATH
14. TODDLER'S ZONE
15. KIDS PLAY AREA

16. GRAND PARENTS NOOK



FLOOR PLANS

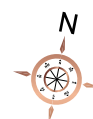
FLOOR PLAN - 8TH TO 12TH FLOOR



TOWER - A

Conditions apply*

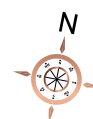
FLOOR PLAN - 15TH TO 19TH & 22ND TO 24TH FLOOR



TOWER - A

Conditions apply*

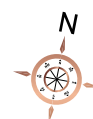
FLOOR PLAN - 25TH, 26TH & 29TH, 31ST FLOOR



TOWER - A

Conditions apply*

FLOOR PLAN - 32ND TO 34TH & 36TH TO 39TH FLOOR



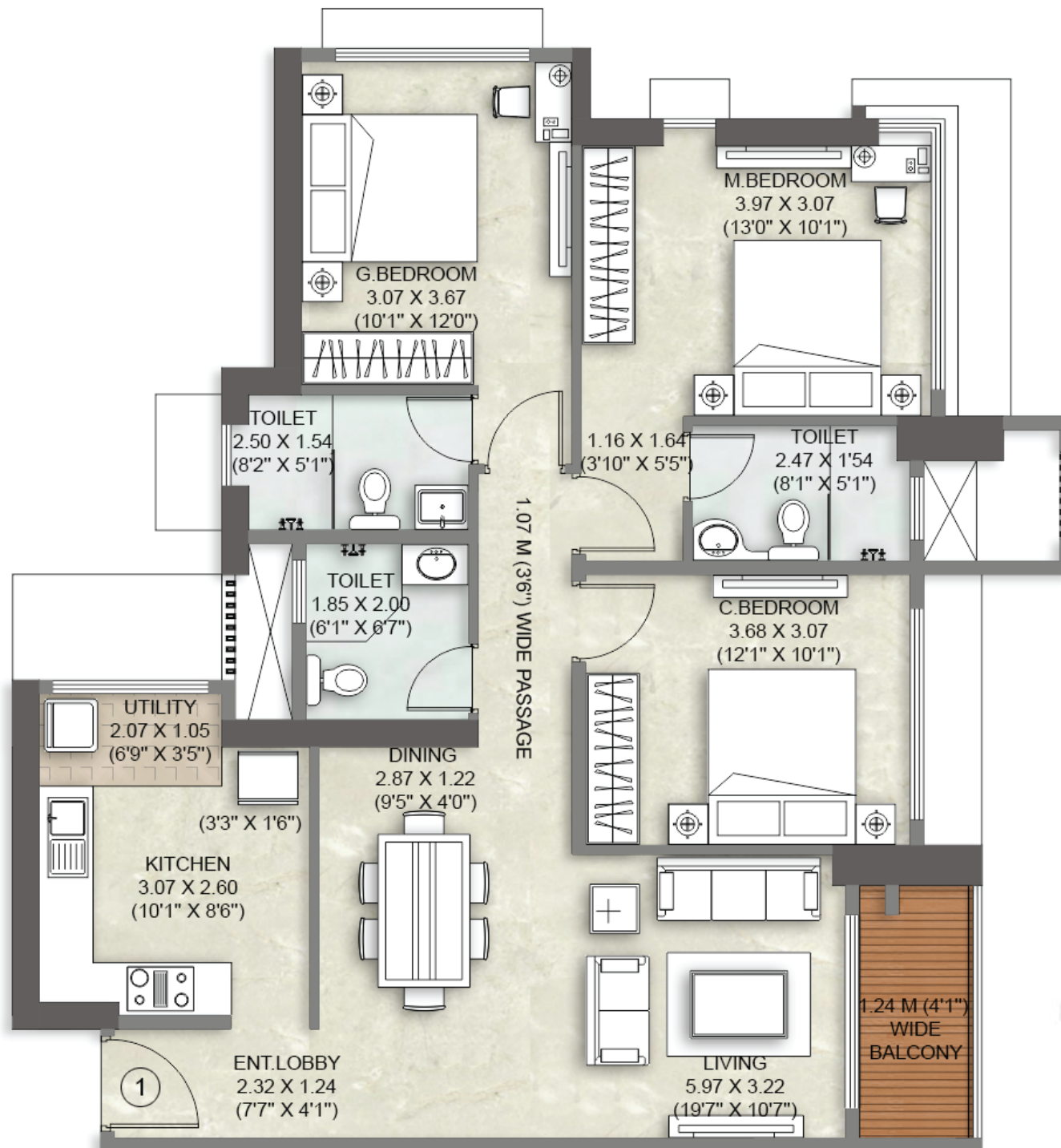
TOWER - A

Conditions apply*

UNIT PLANS

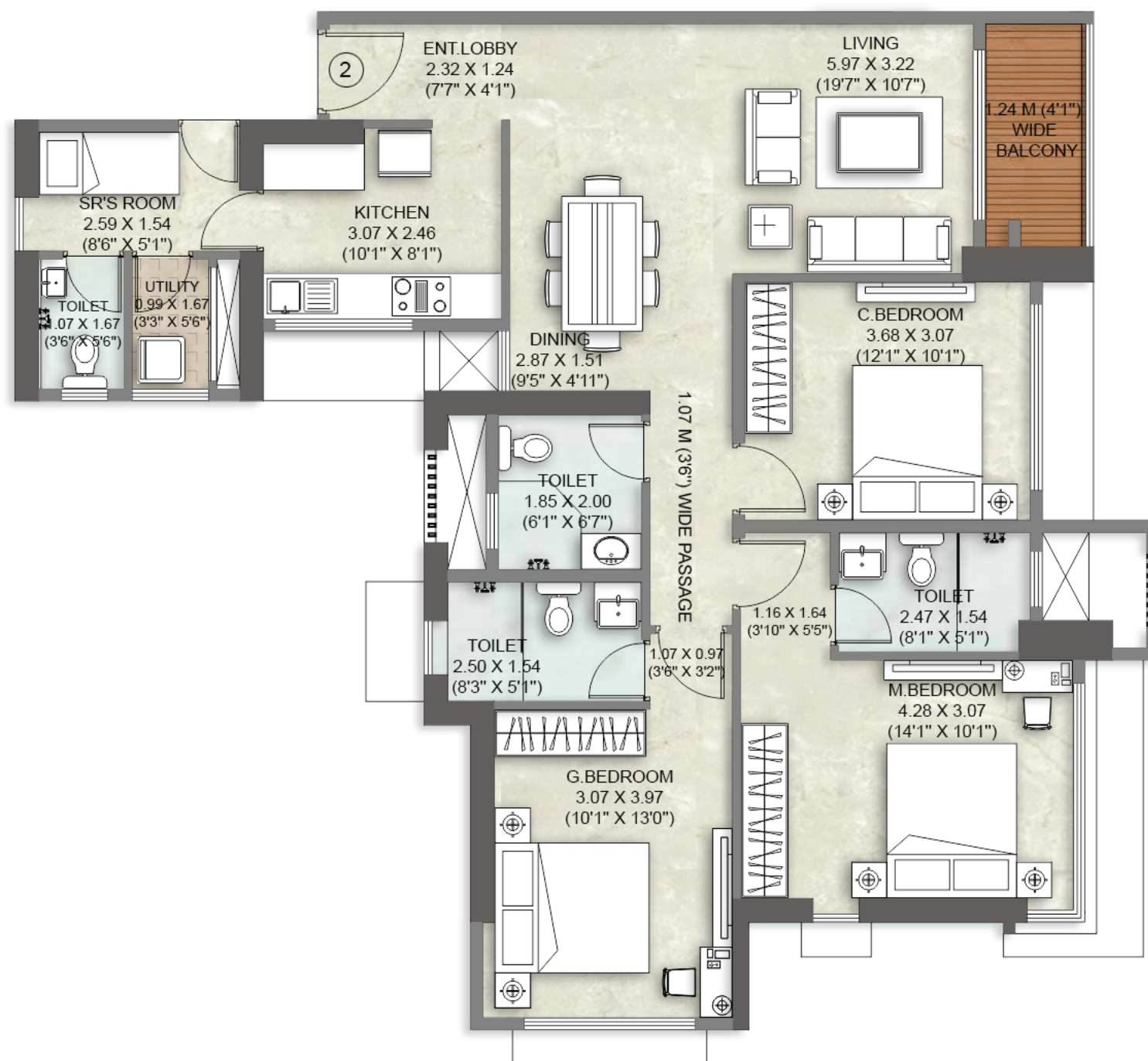
UNIT PLAN - 3 BHK VISTA 3A WITH DECK

3RD TO 5TH, 8TH TO 12TH FLOOR



UNIT PLAN - 3 BHK MAXIMA 1A WITH DECK (3.5 BHK)

6th, 8th TO 13th FLOOR

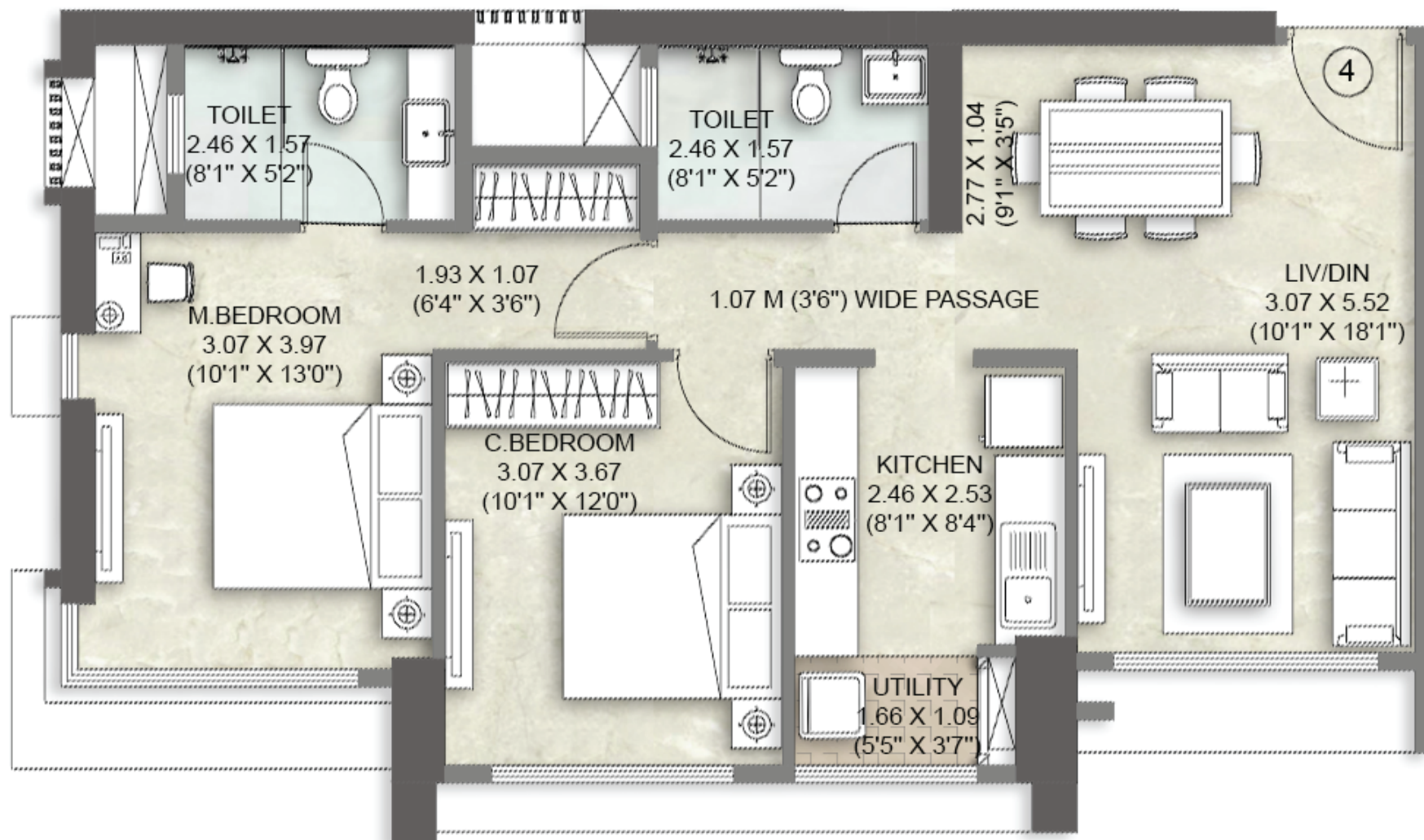


Conditions apply#

TOWER - A

UNIT PLAN - 2 BHK VISTA 1A

5TH TO 14TH FLOOR

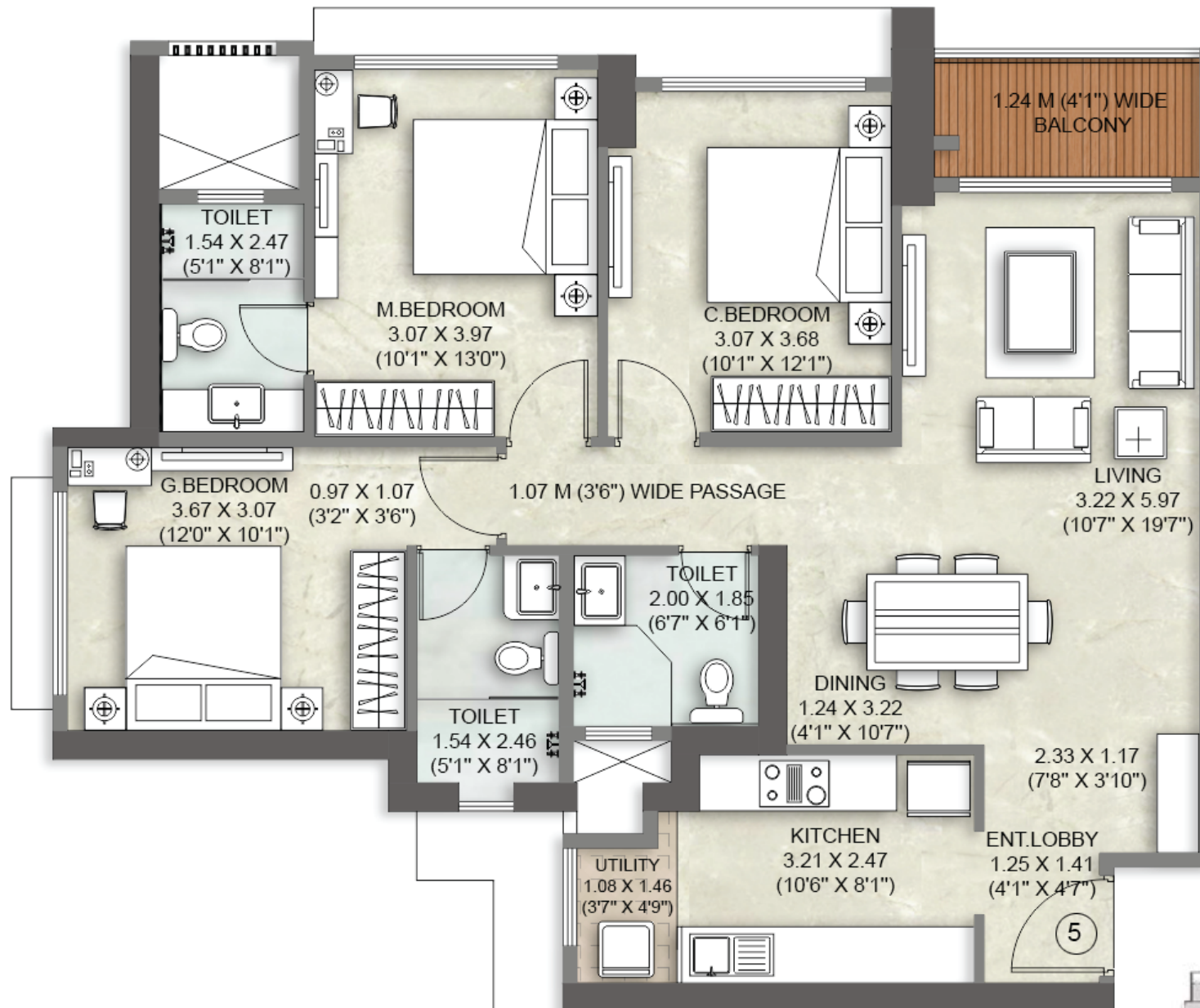


Conditions apply#

TOWER - A

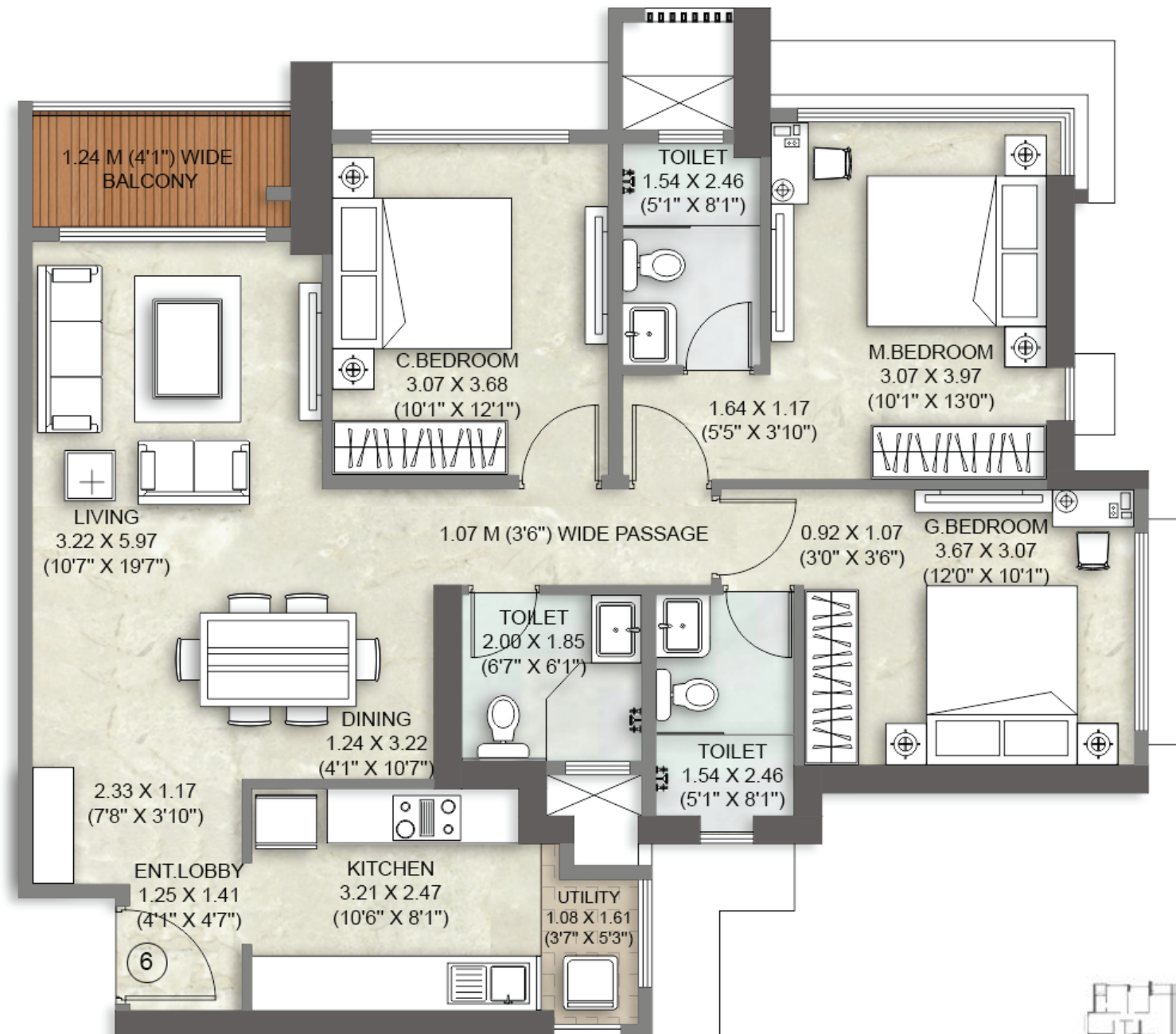
UNIT PLAN - 3 BHK VISTA 5A WITH DECK

2ND TO 14TH FLOOR



UNIT PLAN - 3 BHK VISTA 6A WITH DECK

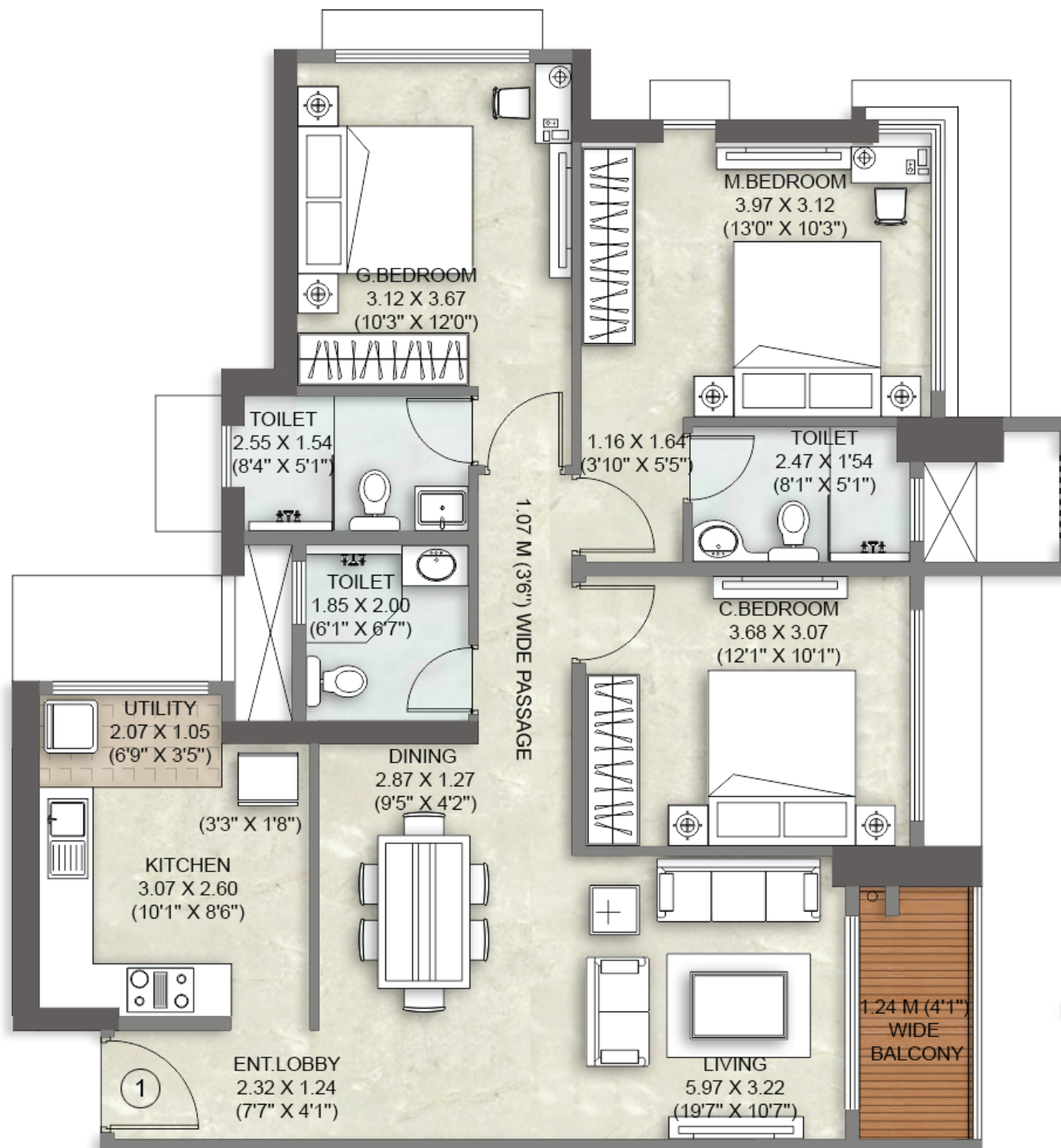
2ND TO 14TH FLOOR



TOWER - A

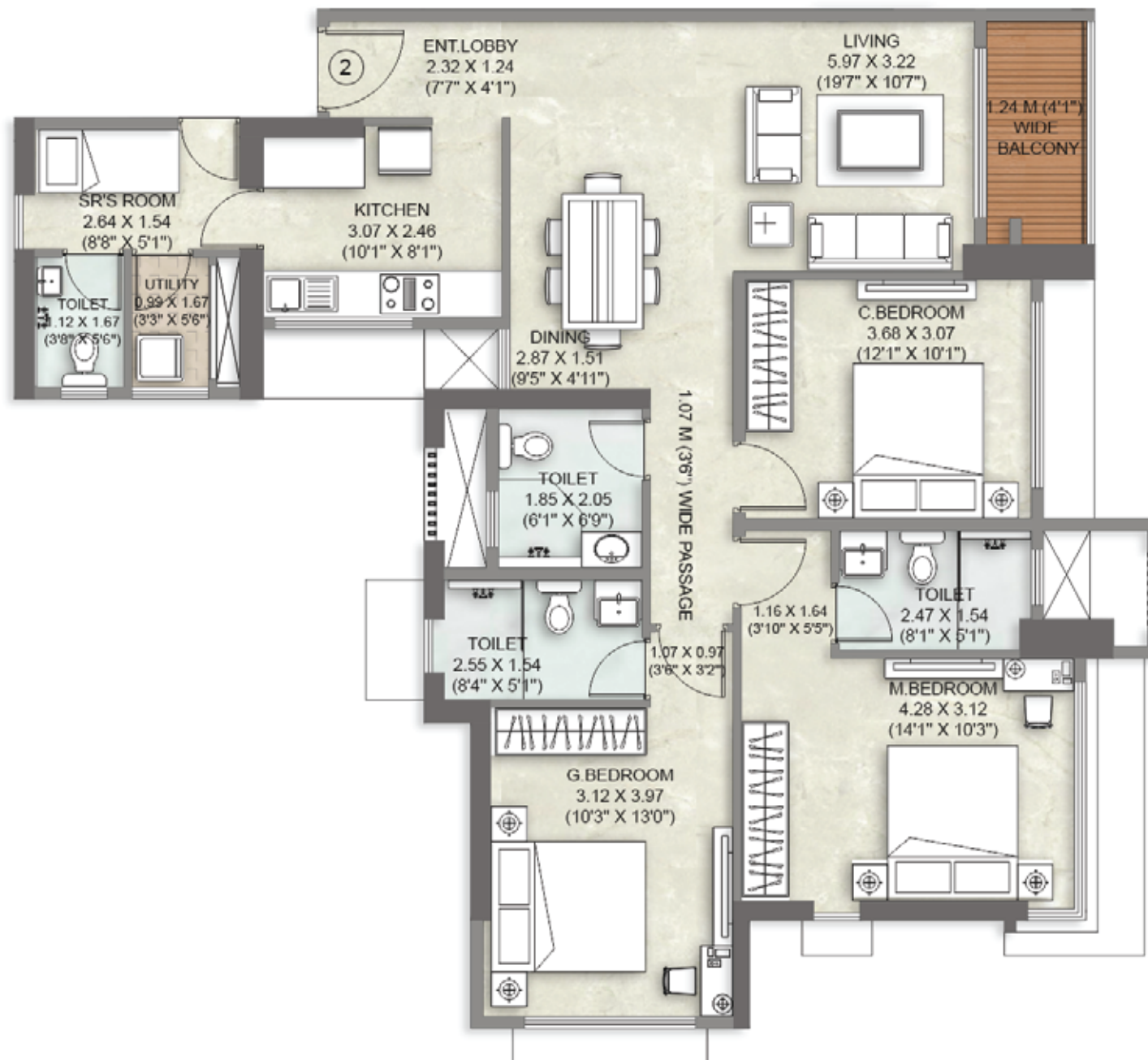
UNIT PLAN - 3 BHK VISTA 3B WITH DECK

15TH TO 19TH & 22ND TO 24TH FLOOR



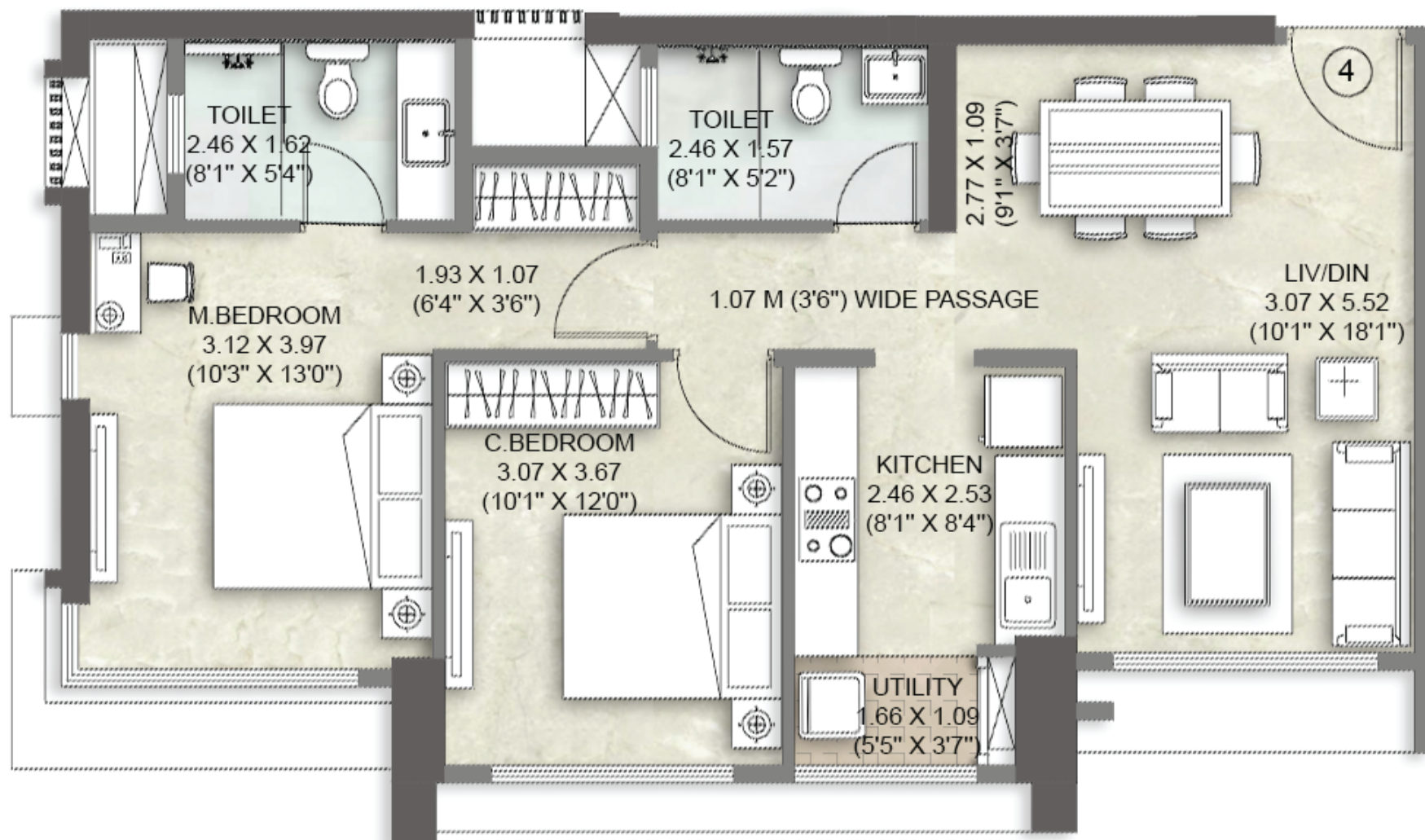
UNIT PLAN - 3 BHK MAXIMA 1B WITH DECK (3.5 BHK)

15TH TO 20TH & 22ND TO 24TH FLOOR



UNIT PLAN - 2 BHK VISTA 1B

15TH TO 24TH FLOOR

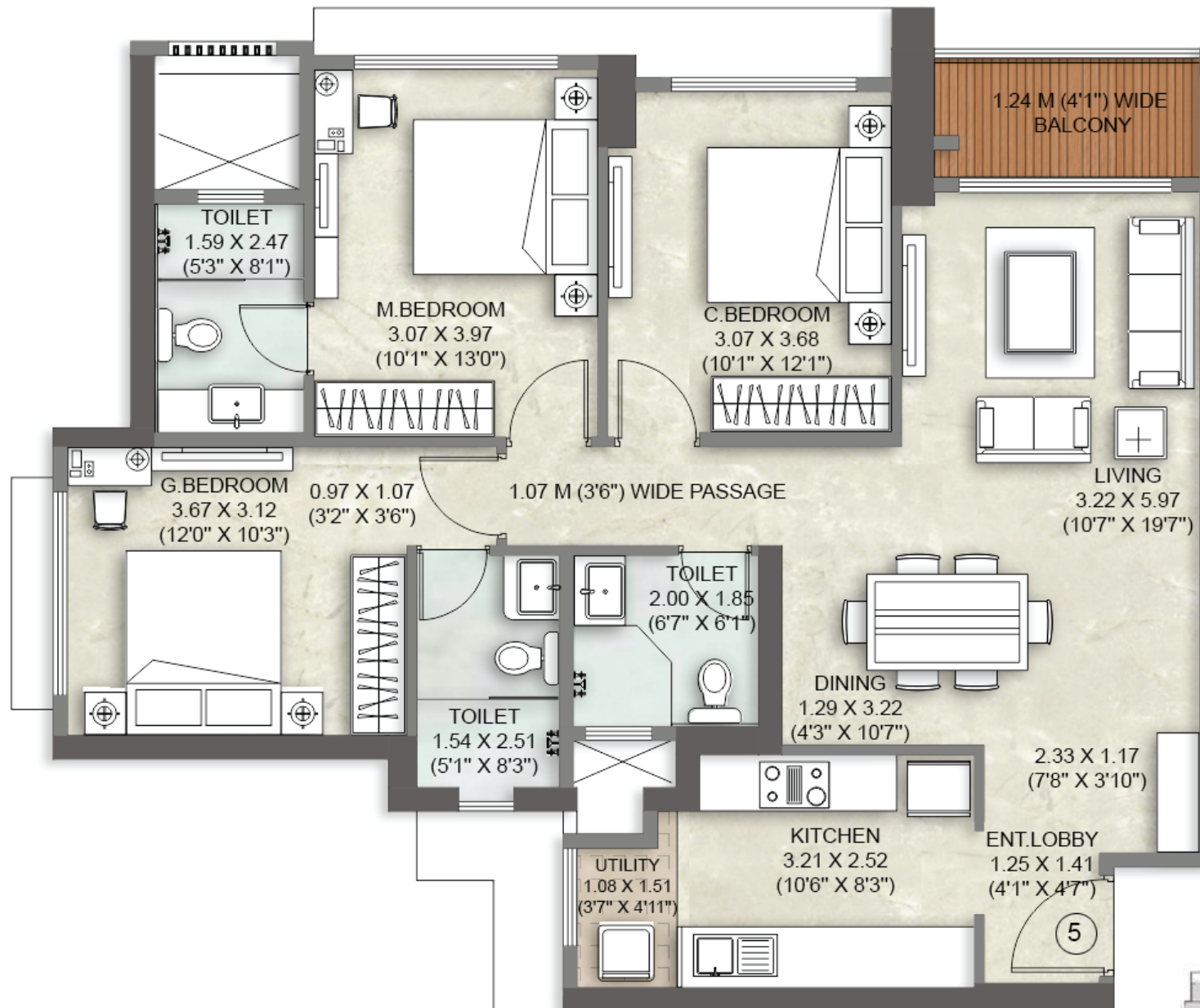


Conditions apply#

TOWER - A

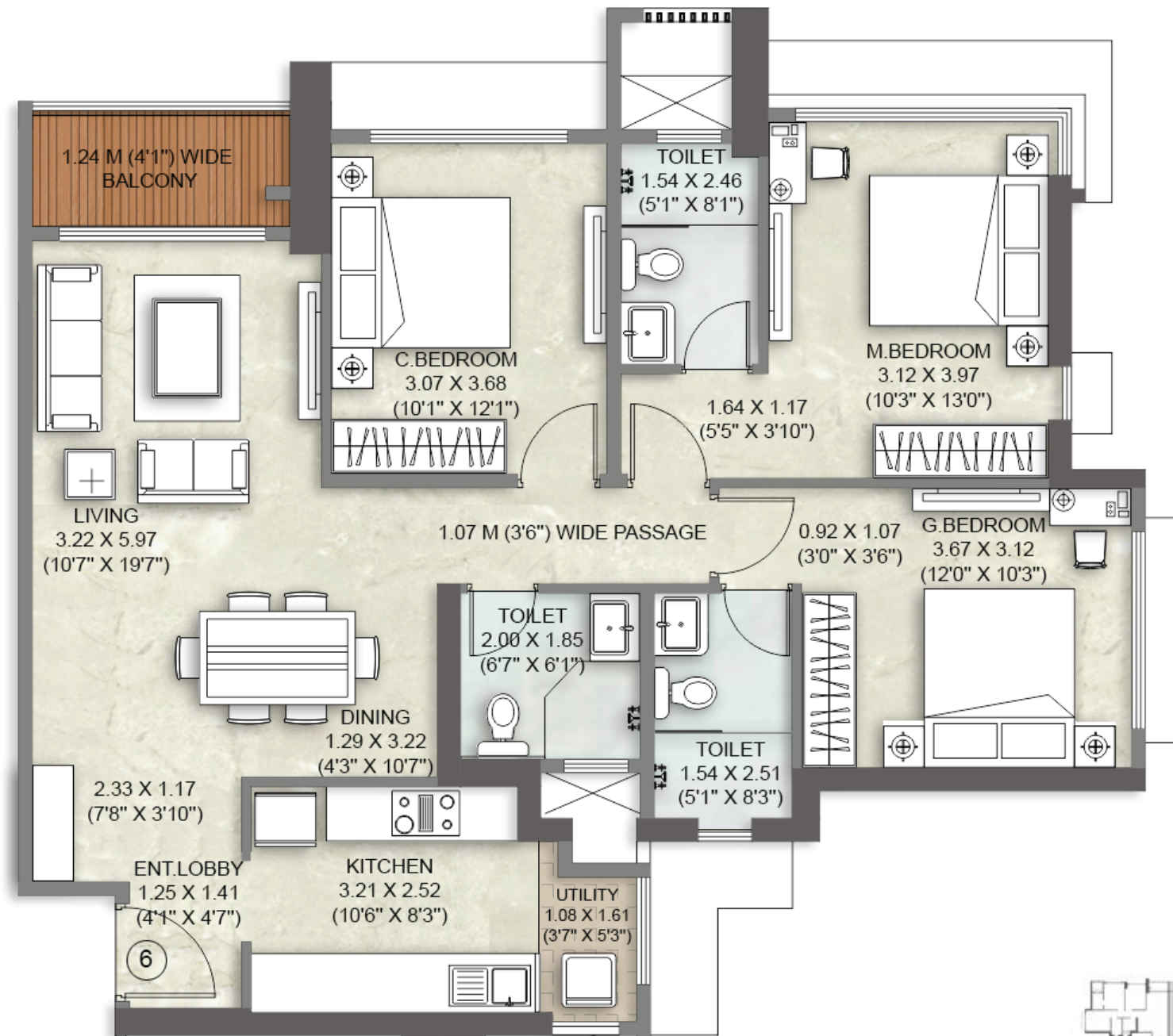
UNIT PLAN - 3 BHK VISTA 5B WITH DECK

15TH TO 24TH FLOOR



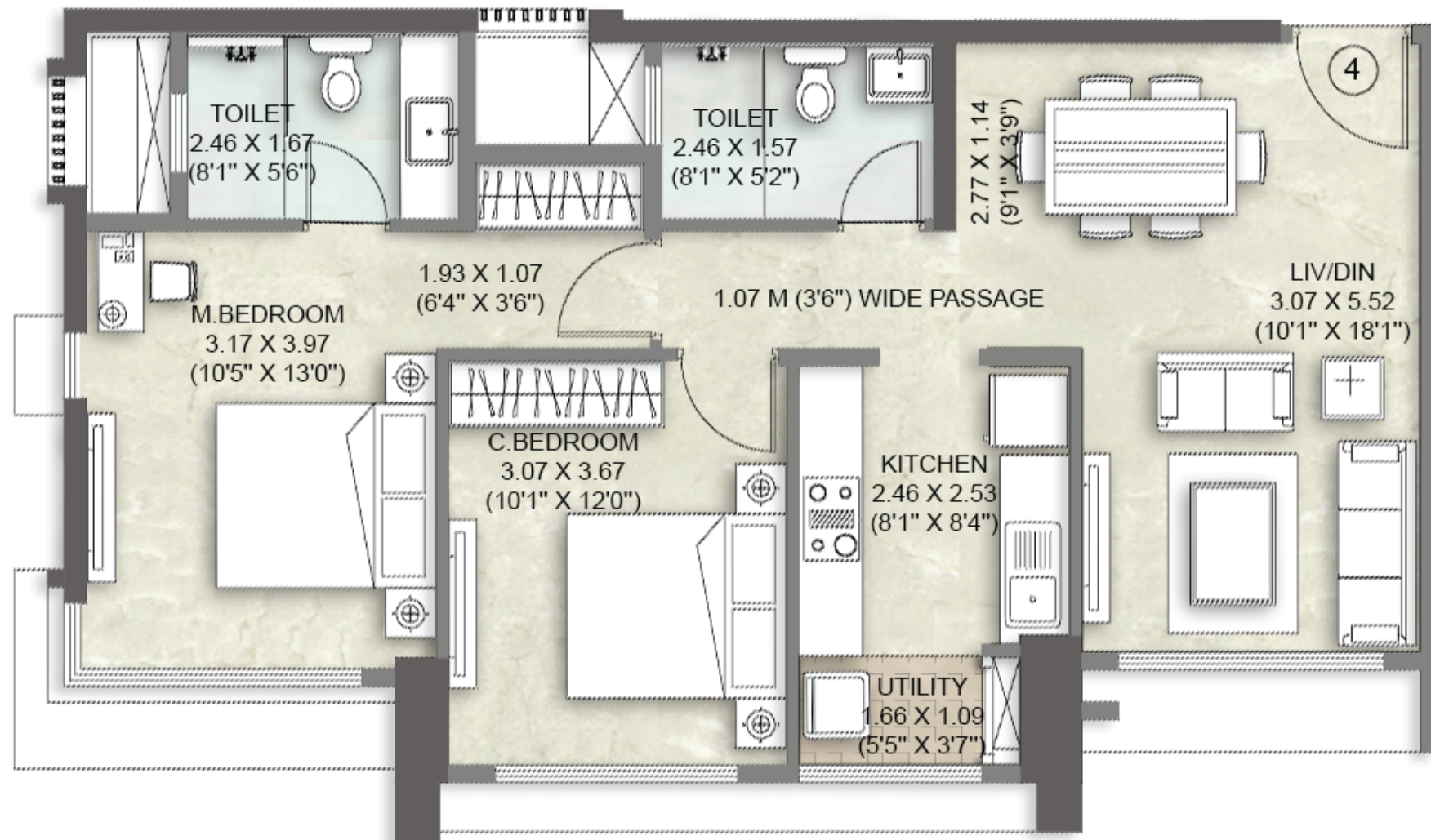
UNIT PLAN - 3 BHK VISTA 6B WITH DECK

15TH TO 24TH FLOOR



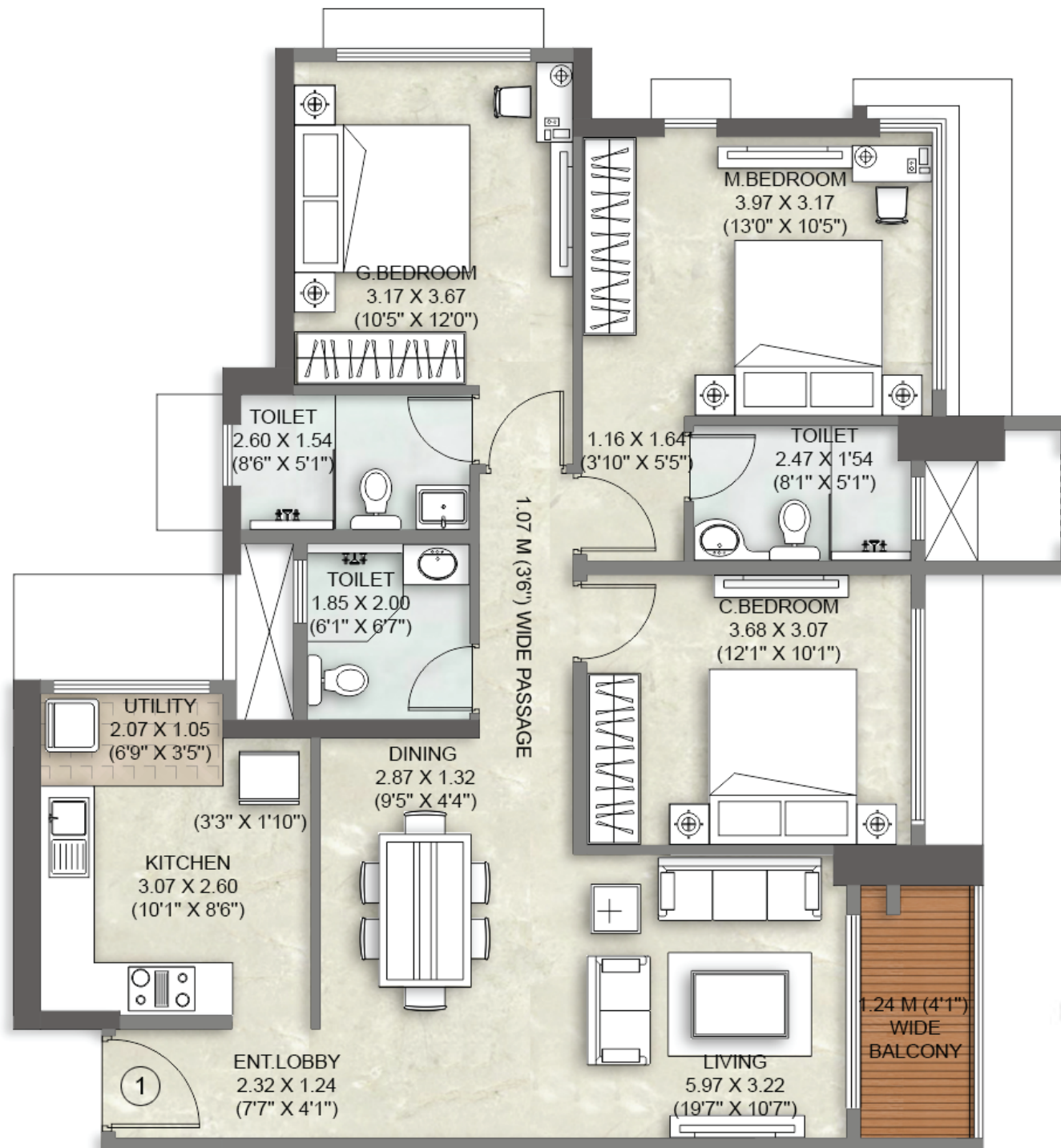
UNIT PLAN - 2 BHK VISTA 1C

25TH TO 31ST FLOOR



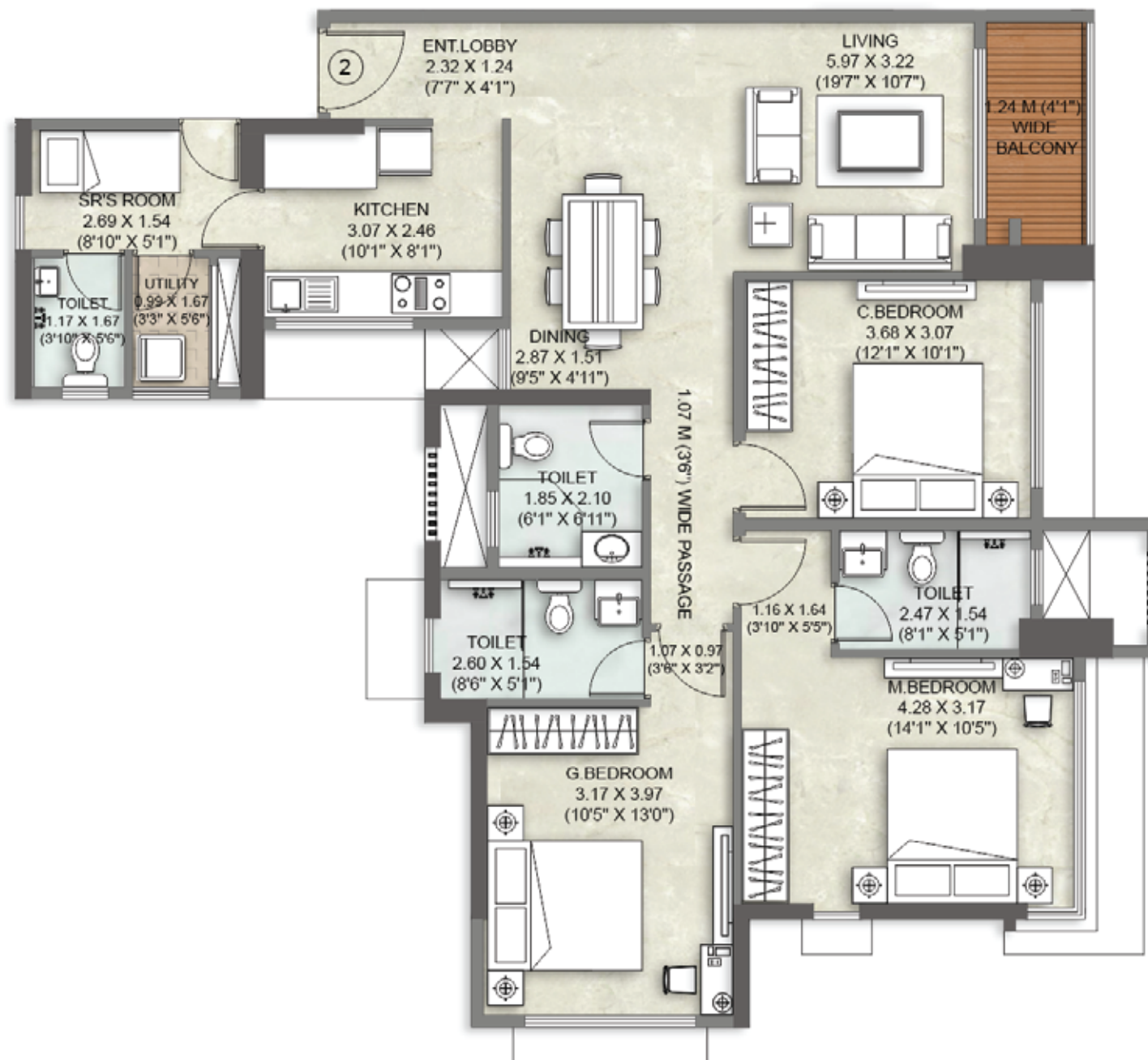
UNIT PLAN - 3 BHK VISTA 3C WITH DECK

25TH, 26TH, 29TH TO 34TH & 36TH TO 39TH FLOOR



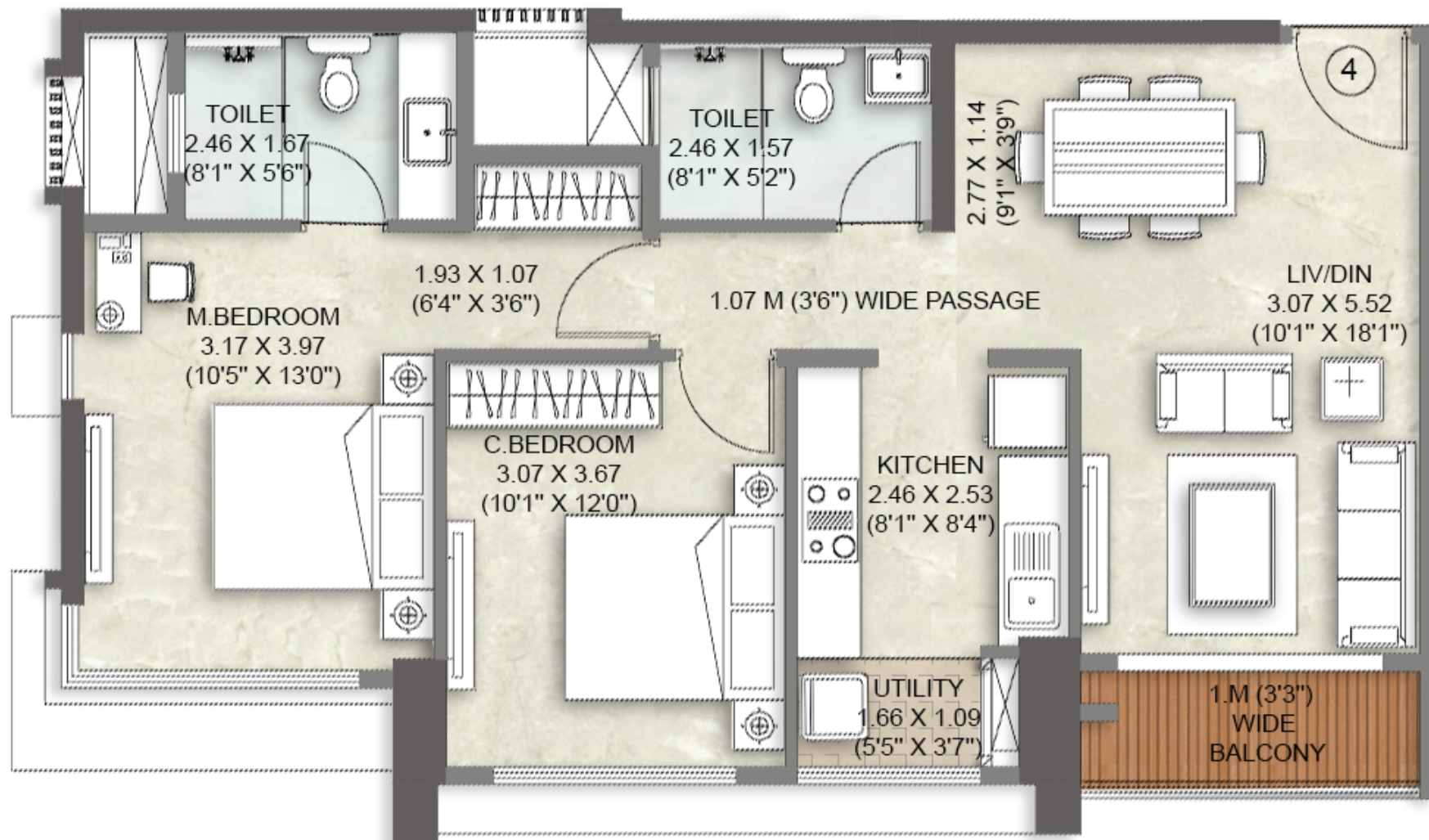
UNIT PLAN - 3 BHK MAXIMA 1C WITH DECK (3.5 BHK)

25TH TO 27TH, 29TH TO 34TH & 36TH TO 39TH FLOOR



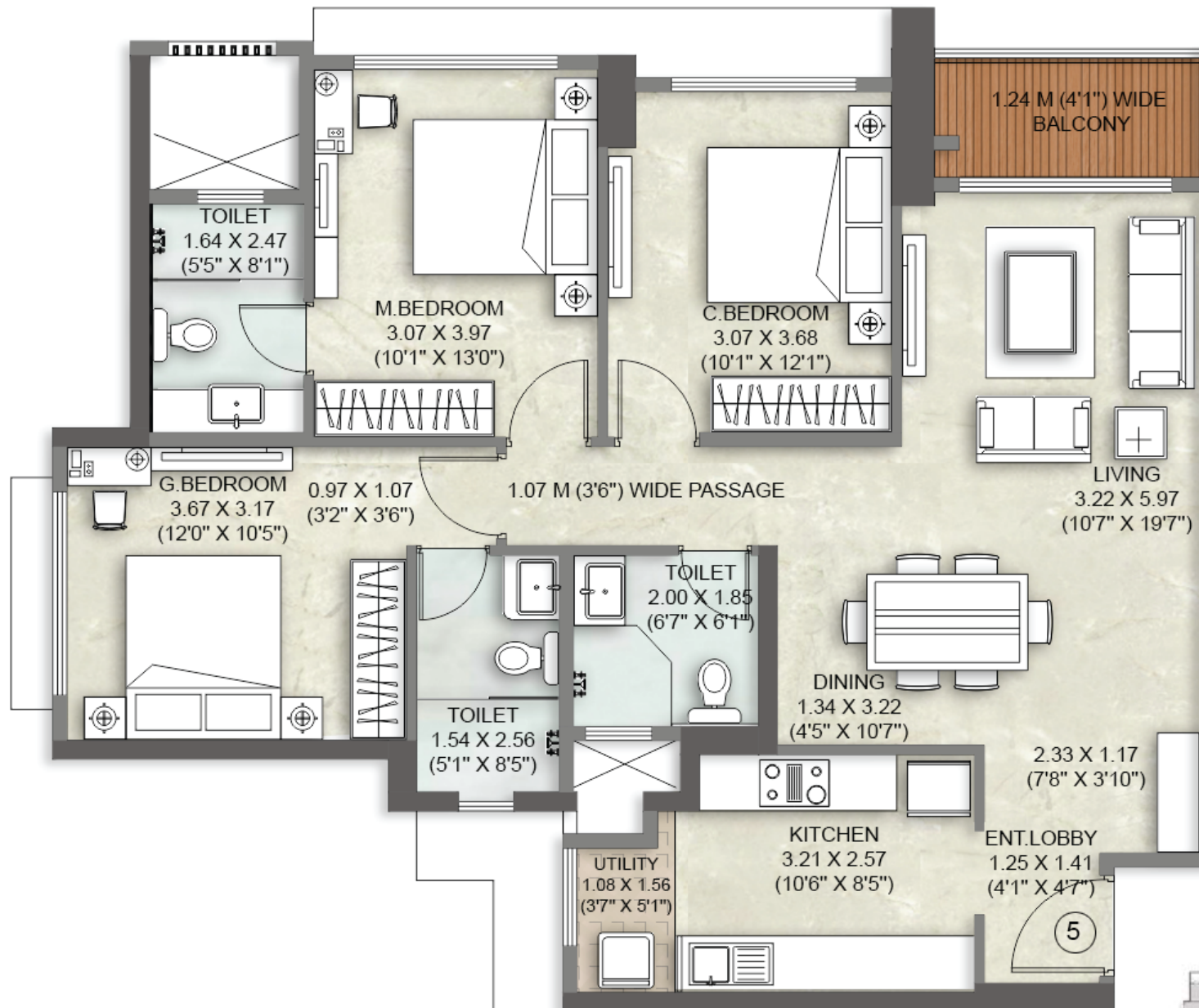
UNIT PLAN - 2 BHK VISTA 1C WITH DECK

32ND TO 39ST FLOOR



UNIT PLAN - 3 BHK VISTA 5C WITH DECK

25TH TO 39TH FLOOR

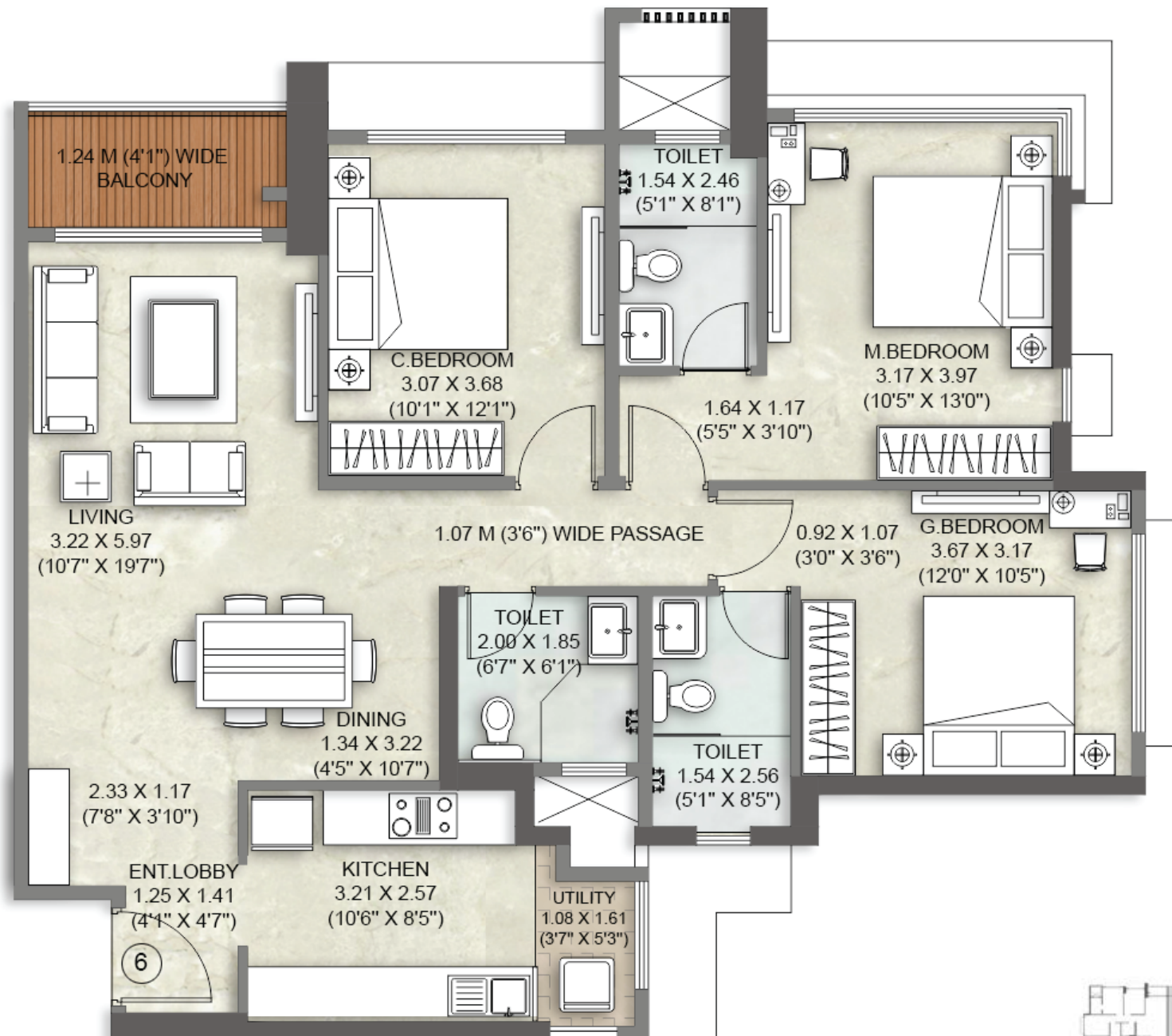


Conditions apply#

TOWER - A

UNIT PLAN - 3 BHK VISTA 6C WITH DECK

25TH TO 39TH FLOOR





PROJECT AMENITIES

PROJECT HIGHLIGHTS

- Grand double-height entrance lobby for each tower
- Elegantly designed club with state-of-the-art amenities
- Pedestrian-friendly Eco-deck area with lush landscapes

COMPLEX AND BUILDING

- Separate drop-off for each tower
- Building equipped with IBMS (Integrated Building Management System)
- Rain water harvesting
- Sewage Treatment Plant (STP)
- Organic Waste Converter (OWC)
- Elevators including Auto Rescue Device (ARD)
- Wi-Fi enabled select common areas
- Piped gas connection

SAFETY AND SECURITY

- Multitier safety and security system
- Firefighting systems
- Building(s) designed for earthquake loads as per applicable I. S. code
- CCTV for monitoring designated common areas
- D. G. power backup for select common areas
- Sprinkler system & mechanical ventilation in the basement
- Public address system
- Video door phone with intercom facility at apartment entrance
- Kitchen equipped with PNG/ heat detector
- Sprinkler system in apartments

LEISURE FEATURES

- Lounge
- Gymnasium with state-of-the-art equipment
- Indoor badminton court
- Squash court
- Spa

- Yoga/ meditation room
- Mini theatre
- Party hall with pantry & store
- BBQ
- Hydrozone - family pool with spa seats, kids' pool & fitness pool
- Multipurpose sports court
- The Centroid - celebration hub, dusk lounge, tiered seating
- Alfresco fitness zone
- Fitness path
- Toddlers' zone
- Kids' play area
- Grandparent's nook
- Organic garden
- Feature planting



APARTMENT FEATURES

FOR 2 & 3 & 3.5 BHK IN TOWER - A & B

APARTMENT FEATURES

- Agglomerated marble/ imported marble in living, dining & passage
- Vitrified tiles in all bedrooms[#]
- Laminate-finished doors
- Glass window with aluminium frames & rail
- Provision for air-conditioning in living,dining & bedrooms
- Video door phone with intercom facility at apartment entrance
- Wi-Fi router point
- Deck with tile flooring and

glass trailing^{*}

KITCHEN FEATURES

- Vitrified tile flooring
- Designer-tile dado
- Granite platform & additional service platform
- Stainless steel single-bowl sink
- Kitchen equipped with PNG/ heat detector
- Exhaust fan & provision for water purifier

BATHROOM FEATURES

- Tile flooring[^]
- Designer tile dado up to door height in all bathrooms[^]
- Premium sanitary & CP fittings[^]
- Hot & cold water mixer in master bathroom
- Exhaust fan
- Water heater in all toilets[^]

FOR 4 BHK & DUPLEX

APARTMENT FEATURES

- Agglomerated marble/ imported marble in living, dining & passage
- Agglomerated marble/ imported marble in all bedrooms[#]
- Laminate-finished doors
- Glass window with aluminium frames & rail
- Provision for air-conditioning in living, dining & bedrooms
- Video door phone with intercom facility atapartment entrance
- Wi-Fi router point
- Deck with tile flooring and glass trailing^{*}

KITCHEN FEATURES

- Quartz-based agglomerated marble flooring
- Designer-tile dado
- Quartz-based agglomerated marble platform & additional service platform
- Stainless steel single-bowl sink
- Kitchen equipped with PNG/ heat detector
- Exhaust fan & provision for water purifier

BATHROOM FEATURES

- Imported marble flooring & dado up to door height in master bathrooms

- Imported marble flooring in other bathrooms[^]
- Designer-tile dado up to door height in other bathrooms[^]
- Fixed glass partition in master bathrooms
- Premium sanitary & CP fittings[^]
- Hot & cold water mixer in master bathroom
- Exhaust fan
- Water heater in all bathrooms[^]

Note: There are 2 master bathrooms in 4 BHK & duplex.
^{*}Except in servant room
^{*}Applicable for apartments with balcony.
[^]Except in servant toilet



Site Address:

Kalpataru Vienta, off Ashok Nagar main rd., near Kalpataru Gardens 1, Ashok Nagar,
Kandivali East, Mumbai – 400 101.

Head Office:

101, Kalpataru Synergy, opp. Grand Hyatt, Santacruz (E), Mumbai – 400 055.

Kalpataru Vienta is registered with MahaRERA bearing reg. no. P51800027059 for Tower A & P51800023768 for Tower B.

Disclosure: All specifications, images, plans, designs, facilities, amenities, dimensions, elevations or any other information contained herein are in respect of the project Kalpataru Vienta bearing MahaRERA reg. no. P51800027059 for Tower A & P51800023768 for Tower B. The same may be subject to changes/ revisions/ alterations in terms of approvals, orders, directions and/or regulations of the concerned/relevant authorities, and/or for compliance with laws/regulations in force from time to time. In view of the above, and in line with our customer policies, we may change/alter the above in consonance with approvals, orders, directions, applicable laws, regulations, etc. Unless otherwise stated, all the images, visuals, materials and information contained herein are purely creative/artistic concepts and may not be actual representations of the product and/or any amenities. Features, fixtures, fittings, goods, accessories, furniture and any other information reflected/displayed in the images are strictly for illustrative and representational purposes only and are not part of the standard final amenities & finishes. None of the above may be construed to form any basis of, or serve as an inducement or invitation for payment of any advance and/or deposit, to be made by a prospective customer, under relevant provisions of law or otherwise. Solely the amenities/ specifications, features mentioned in the agreement for sale (if any) shall be final. (Refer: <https://maharera.mahaonline.gov.in/>). For private circulation only. This property is secured with The property is secured with Vistra ITCL (India) Limited. The No Objection Certificate/ Permission would be issued, at the relevant time, if required. Conditions apply.