

Heart

Home



The Kollage  
a residential masterpiece



# The Kollage

Zire Rushi Developers

Jt. Venture of Zire Realty & Rushi Construction Company

Zire – Rushi with a highly talented & experienced professional team, has an upper edge on understanding the customer's vision.

Thus translating the customer's dream into reality on par with international standards

Zire – Rushi presents 'The Kollage'

- A golden opportunity to own a place in the heart of suburbs – Andheri (East). With 180' frontage it is strategically located giving you an immediate access to the Western Express Highway, which is just 300 mts from your residence offering an edge over traffic jams.
- A great combo of W.E. Highway, Western Railway, International and Domestic airports in proximity to your residence is a rare luxury in Mumbai. The airports are approx. 2 kms and nearest railway station is less than a kilometer from your residence.
- Hundreds of hours, one will save on commuting in a year is a priceless gift to one's life. This surplus time can be utilized for quality time and recreation... after all we live just once, make the best of life by giving it more valuable time.
- **The Kollage offers you 'convenience' that will combat the stress of urban life pampering you in a relaxed comfort zone.**
- MIDC, Seepz, Andheri Kurla Road and Bandra Kurla Complex – The live wire business centers are within easy reach.
- Andheri, Vile Parle and Santacruz localities are considered to be educational hubs having the best of schools, colleges and academic activity centres.
- Plus the latest malls, theatres, markets & temples are easily accessible.
- Last but not the least a sky garden filled with freshness of air, panoramic view of the glittering stars, swimming pool and hi tech gym, recreation centre and kidz zone rejuvenates the body of all age groups.
- 'The Kollage' is the most convenient 'lifestyle' address in the western suburbs

*If a building becomes architecture, then it is art.*

- Arne Jacobsen

This high rise building offers you abundant light and proper ventilation. Fresh air throughout the day will keep you rejuvenated and in the best of your moods.







Dreams

Concepts

*Everything you imagine is real*

- Pablo Picasso





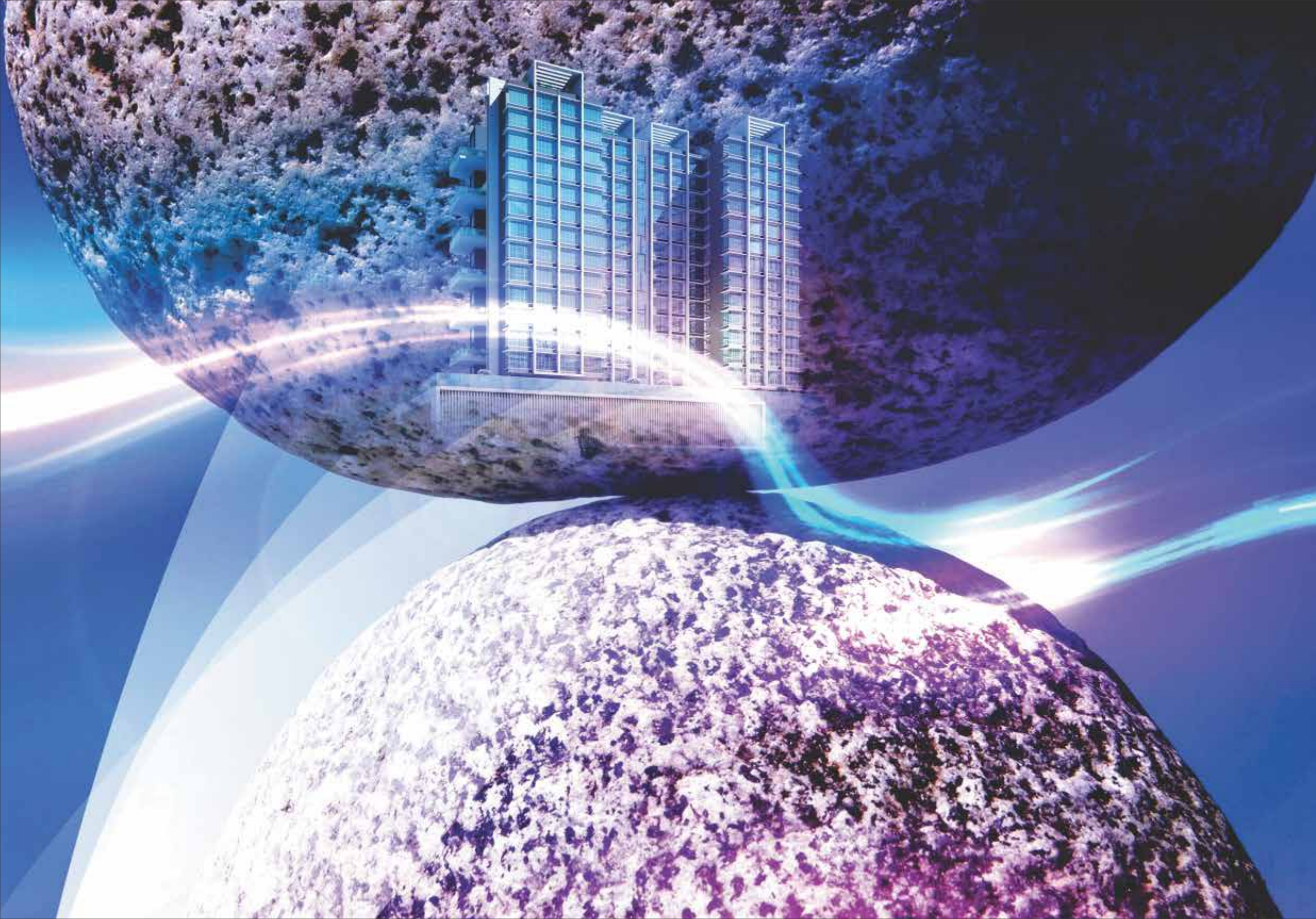
Intelligence

Design

*A man paints with his brains  
and not with his hands*

- Michelangelo





Balance

Space

*What art offers is space -  
A certain breathing room for the spirit*

- John Updike





Rhythm  
& flow

*All art is but imitation of nature*

- Lucius Seneca





# Integrity & Diversity

*Art is the only way to run  
away without leaving home*

- Twyla Tharp





Strokes

Style

*Art enables us to find ourselves and  
loose ourselves at the same time*

- Thomas Merton

... As you turn overleaf,  
may you find & loose  
yourself in the  
“state of the art”  
called The Kollage





#### Entrance Lobby

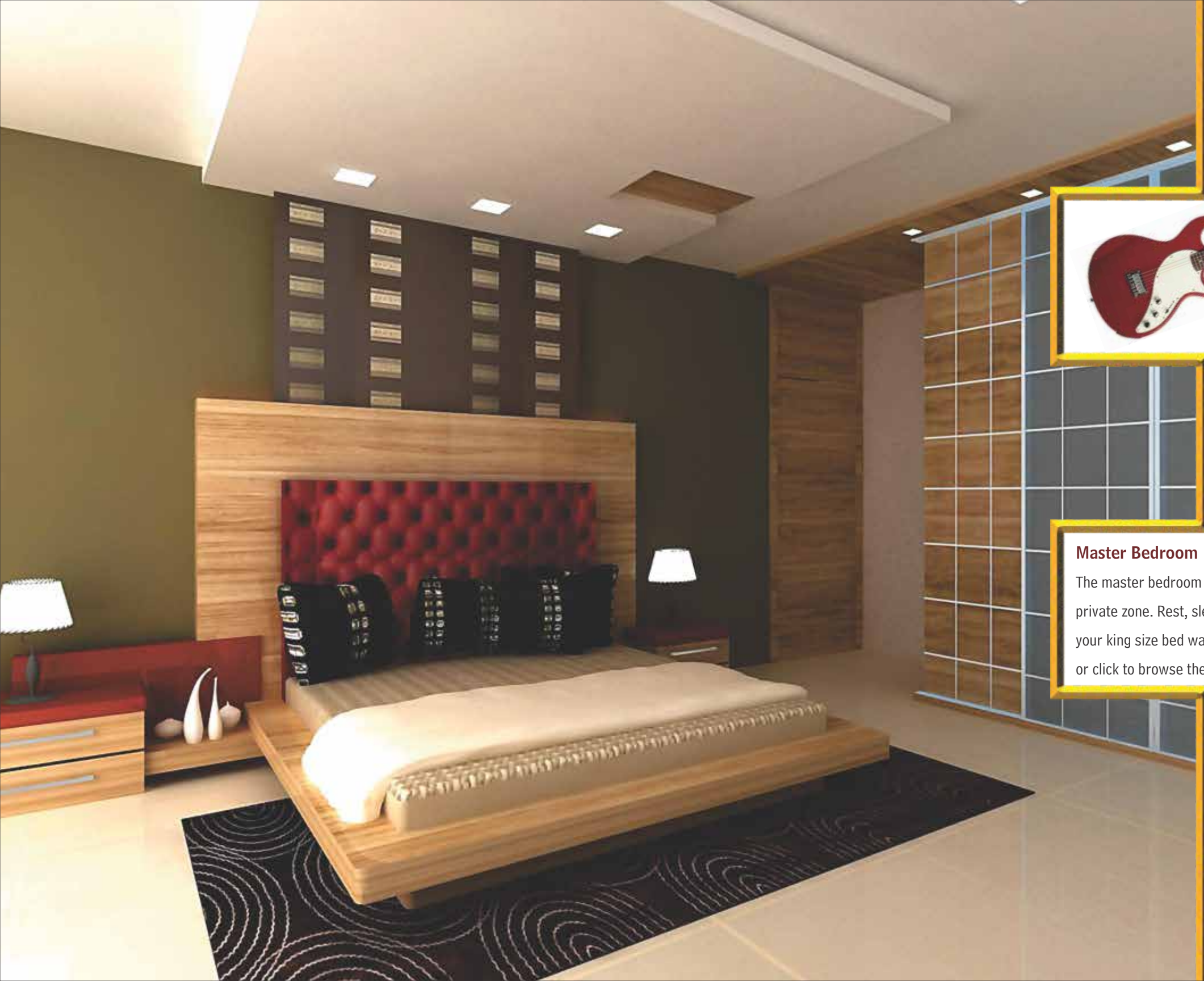
A grand lobby where luxury, space and a censor security guides your path as you walk towards the hi-speed, biometric monitored elevators to your home. An ideal ambience for polite conversations with your neighbours or quick meetings.



#### Living Room

A life size Living Room is your welcome space and reflection of your personality. Your décor fantasies take shape as you sink in your sofa, sip your favourite drink or giggle with family and friends.





### Master Bedroom

The master bedroom – your den ... your private zone. Rest, sleep or just cuddle up in your king size bed watching your favourite flick or click to browse the world.

The Kallio



### Kitchen

It was once a woman's domain, today every family member exercises their culinary skills... Yes cooking is therapeutic even if it's a simple meal prepared in a spacious modular kitchen

The Kallio





#### Bathroom

Your best brands of shampoos, soaps and toiletries are complimented with designer sanitary wares. Elegant tile flooring and dado upto door level. Wash basin with granite counter. Dry and wet area facility ... the ideal setting for bathroom singers

The Vantage



The Vantage

2 BHK









#### Fitness Zone

Workout in the active environs and give your 24 x 7 lifestyle a positive boost. A fully equipped hi-tech fitness centre with steam sauna & Jacuzzi - grooms all age groups. After all ...

your health is of paramount importance

The V



#### Terrace Garden with jogging track

Touch the stars, embrace the clouds or bathe in the rain. Breathe in the freshness of morning air, cool breeze in the evenings, a panoramic view of the city complete with welcome sunrises and golden sunsets.

Go jogging and stay fit.

The V





### Swimming Pool

Bring out your sarongs, swim suits and dive into luxury of a deck pool, during any season.  
Or just chill in blue waters with Mumbai city below you

The Kallio



### Kidz zone

This fairy tale patch is carpeted with green lawns. Children can play safe, awaken their fantasies, run, jump and roll with butterflies delighting them

The Kallio





### Indore Games

De-stress yourself with indoor games like Billiards, Table Tennis, Carom, make moves on chessboard etc.

The Valley



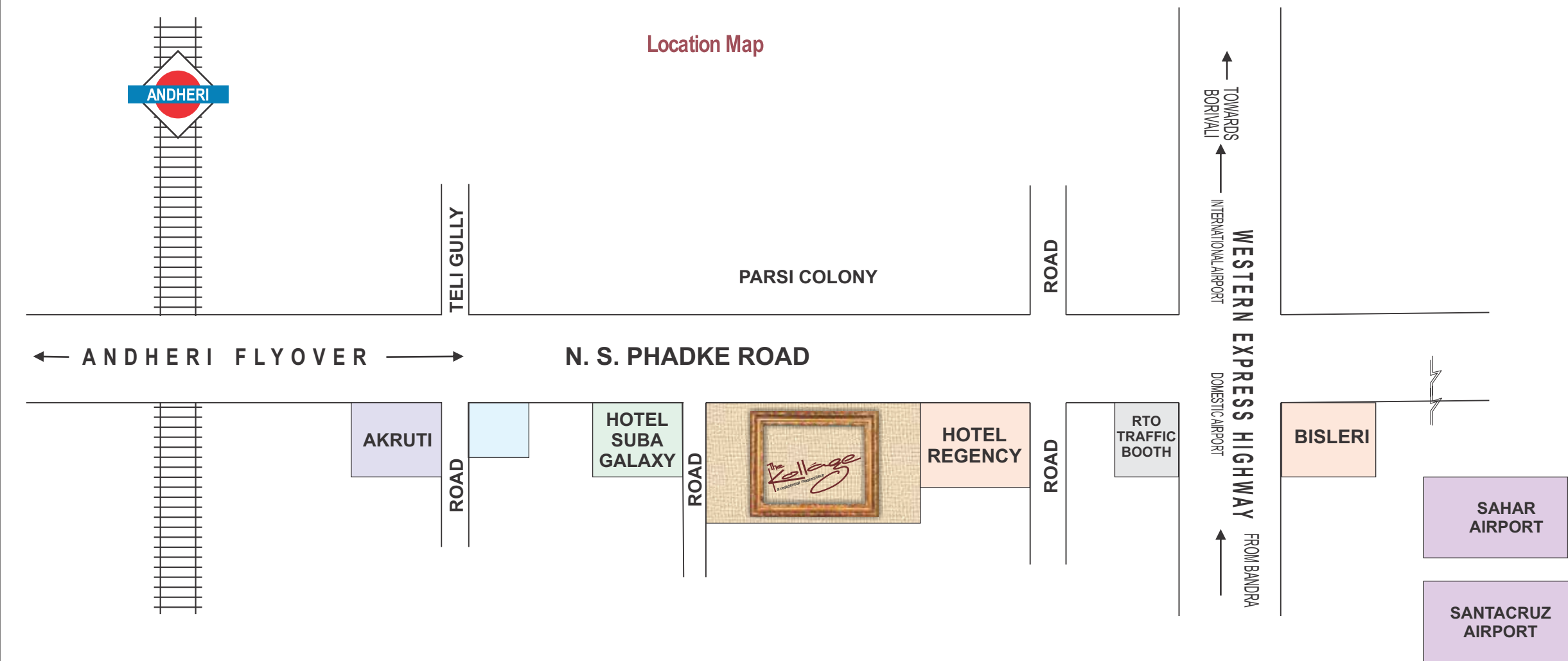
### Community Hall

A community hall catering to 50 to 100 people, can be used for meditation, society meetings etc.



The Valley





**Design Architect**  
Mandviwala Qutub & Associates

**BMC Architect**  
Shri Umesh Bhatt

**R.C.C. Consultant**  
Shri Navin Shah

**Developers**  
ZIRE RUSHI CONSTRUCTIONS



Jt. Venture of  
ZIRE REALTY LTD. & RUSHI CONSTRUCTION COMPANY  
The Kollage  
N. S. Phadke Marg, Andheri (East), Mumbai – 400 069  
For Inquiries contact : 9619827779  
• Email : thekollage@gmail.com

*The Kollage*  
a residential masterpiece

**Disclaimer**

The drawings, plans, models, units, designs, layout, elevations, specifications, reports, photographs, surveys, calculations and other data, on this brochure are for illustrative purpose only. The brochure is made available for informational purposes only in relation to project. The developer reserves the sole rights to amend the number of units, designs, layout, elevations, colour schemes, specifications and amenities without prior notice. All dimensions are approximate and subject to construction variances and approvals.



*A kollage is work of art made from an assemblage of different forms, thus creating a new whole.*

# The Kollage

a residential masterpiece

*...offers you an assemblage  
of designer apartments,  
metropolitan culture and  
a blend of lifestyles in the maximum city.*

A Project by:  
**Zire Rushi Construction**



Jt. Venture of Zire Realty Ltd. & Rushi Construction Company  
Site Address : Parsi Panchayat Road, Andheri (East), Mumbai - 400 059



CHANNEL PARTNER



**Heena**

Jannat homes

 **9167779666**

**Call**